

WinDVA2 – Rob Lichtefeld – rob.lichtefeld "at" yahoo.com

<u>Version History</u>	<u>Notes</u>
1.0.0 2012/07/12	Initial public release.
1.0.1 2012/07/13	Added the checking and deletion of the DVArchive "is running" semaphore.

READ ME:

WinDVA2 is a program that can be used to launch, hide and close the DVArchive program on Windows machines. DVArchive is a java program Copyright (c) 2006 - Gerry Duprey - All rights reserved. The program can be downloaded and more information can be found here: <http://dvarchive.org/>

WinDVA2 can also be used to perform these functions for multiple copies of DVArchive or other Windows programs.

What it does:

When WinDVA2 launches, it hides itself in the Windows Notification bar.

WinDVA2 searches for windows with the specified captions.

When it finds one in its list, it checks to see if that window is minimized. If it is minimized, then it hides the window.

If it doesn't find any windows with the specified caption, then it attempts to launch the application.

When Windows begins to shutdown, WinDVA2 sends a WM_CLOSE message to the program window(s). This will cause DVArchive to shutdown correctly, since java doesn't send such a message.

Interaction:

To interact with WinDVA2, either double click on its icon in the Notification bar, or right-click on the icon.

If you double-click the icon, any hidden applications are shown.

If you right-click, you can use the menus displayed, to show the applications, close the applications, configure WinDVA2 or close WinDVA2.

Installation:

Copy/unzip/place the WinDVA2 files in a folder on your machine, where you have Write rights.

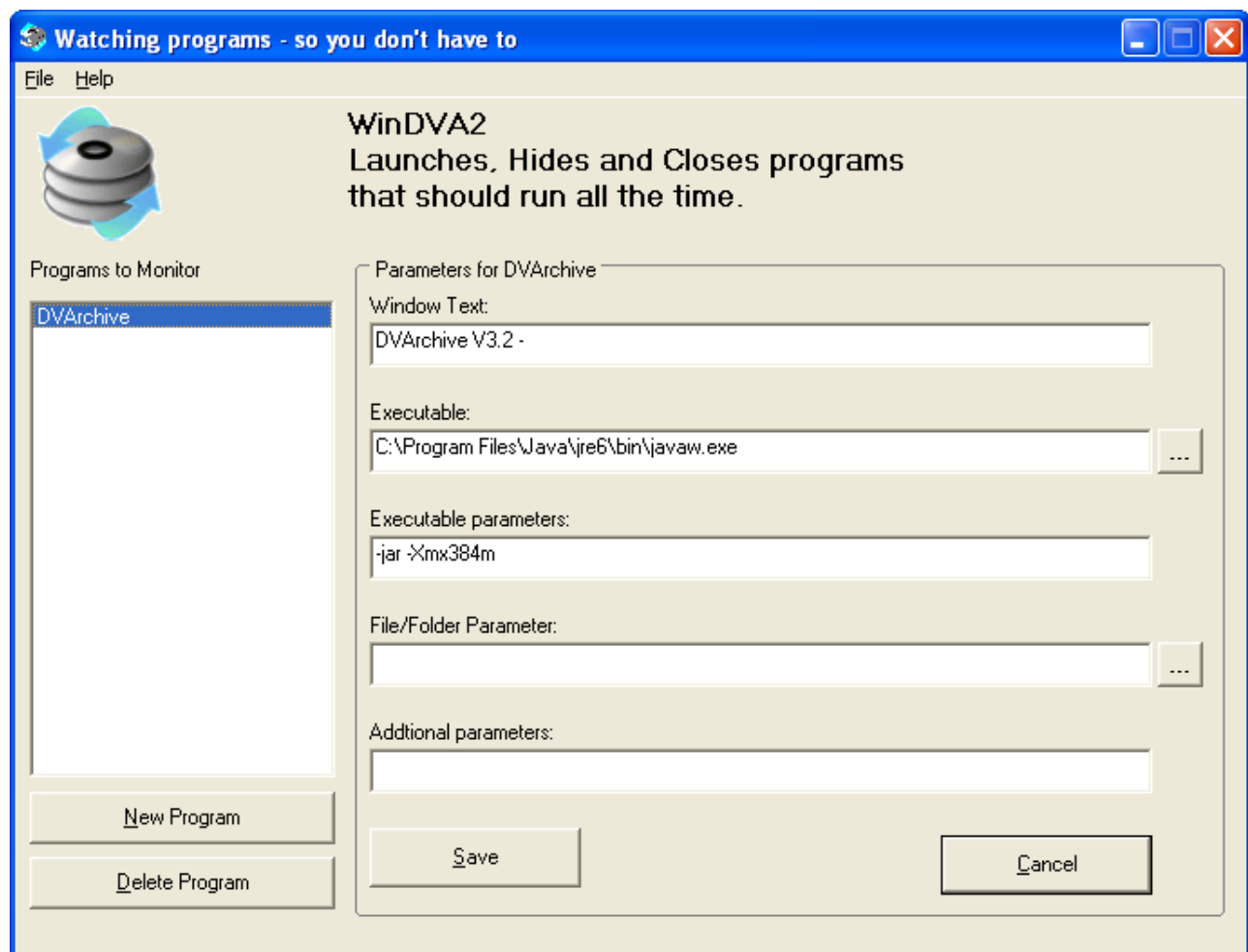
Under Vista and Win7, do not place the program under "Program Files" or "Program Files (x86)", as the UAC on those operating system precludes that normal user writing to those folders.

If your DVArchive folder is not located under either of those 2 folders, then you may wish to place the WinDVA2 files in the same folder as your DVArchive.

Configuration:

The first time WinDVA2 is launched, it will search the registry to find the location of your Java installation, and will display a screen where you can select the location of your dvarchive.jar file and adjust the parameters that are used to run DVArchive.

Below is a sample:



The Window Text is the unique text that is displayed on the main window of DVArchive. WinDVA2 will look for a matching window that contains this text. The default for DVArchive is “DVArchive V3.2 –” because this is the beginning of the caption for any DVArchive window.

If launching 2 copies of DVArchive, add the location of the .XML file that DVArchive uses, since that is the window caption for that instance.

The Executable is the program to be launched. You can use the button to the right of the text box to browse for the executable.

The Executable parameters are the parameters that java needs before the name of the .jar file

The File/Folder Parameter is the location of the .jar file. This needs to be the fully qualified name, including Drive/Folder and name. You can use the button to the right of the text box to browse for the executable and/or folder.

The Additional parameters are any parameters that DVArchive needs, such as the location of the .xml file to use for storage.

After you make the settings, press the Save button, to save these settings to the WinDVA2.ini file.

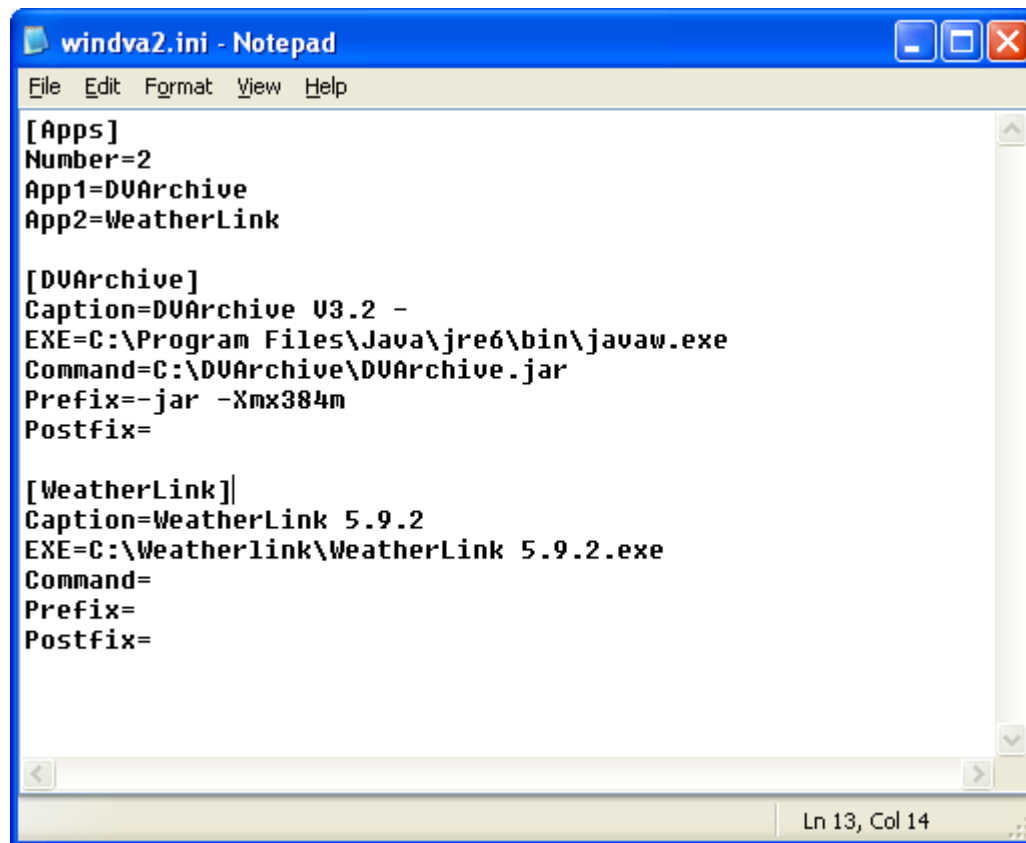
When you have made all the changes, and have pressed Save, then either minimize or close the window, and WinDVA2 will go to work.

You can add additional programs to be monitored by pressing the New Program button, and filling in the appropriate settings.

INI File:

All the settings for WinDVA2 are kept in an INI file in the same folder as the WinDVA2.exe program file. The settings can be manually edited.

Here are the settings for the ones that I am currently using.



```
windva2.ini - Notepad
File Edit Format View Help

[Apps]
Number=2
App1=DVArchive
App2=WeatherLink

[DVArchive]
Caption=DVArchive U3.2 -
EXE=C:\Program Files\Java\jre6\bin\javaw.exe
Command=C:\DVArchive\DVArchive.jar
Prefix=-jar -Xmx384m
Postfix=

[WeatherLink]
Caption=WeatherLink 5.9.2
EXE=C:\Weatherlink\WeatherLink 5.9.2.exe
Command=
Prefix=
Postfix=

Ln 13, Col 14
```

The top section specifies the number of apps to be watched, and the names of the sections for each of the apps. The setting next to App1, is the same as the [DVArchive] section below.